



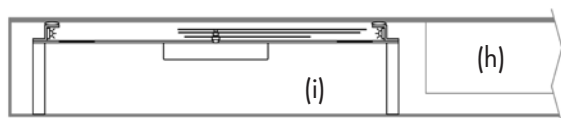
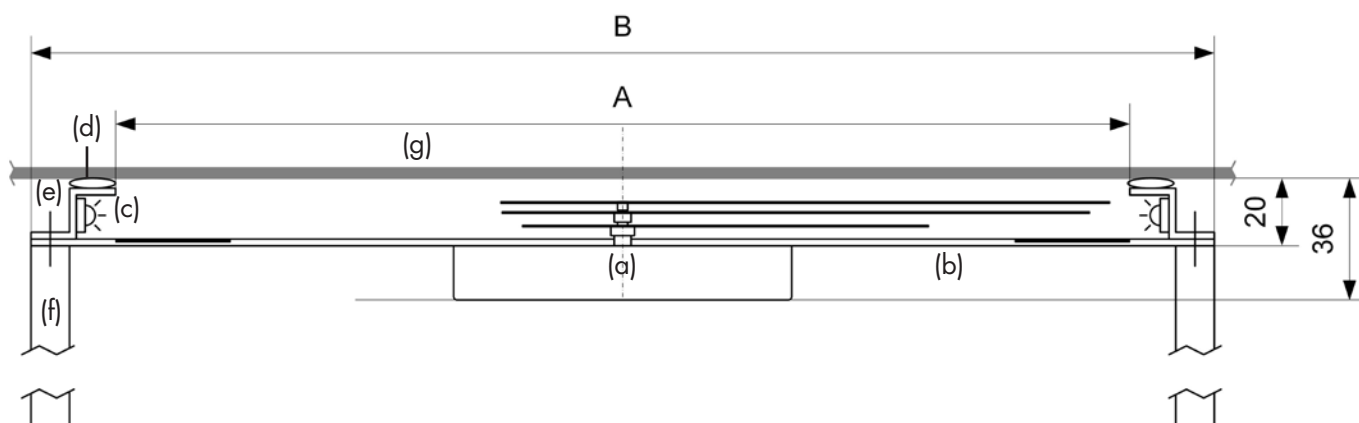
## Outdoor panel clock set for PIS

# PANEL-CLOCK

The MOBATIC panel clock is the easy solution to equip your customized Passenger Information System (PIS) with an integrated analog clock. A panel clock is a complete module specially designed for mounting in panels with an existing front glass.

Due to the slim design, whether with or without LED illumination, it is the perfect solution for almost all panel applications.

## Details - PANEL-CLOCK

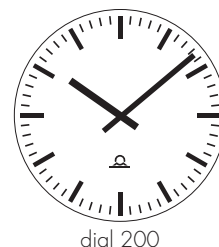


### Legend

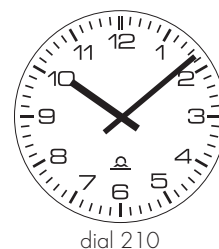
- (a) movement SAM/SEM/SAN/SEN 40
- (b) metal dial
- (c) LED ring
- (d) rubber seal
- (e) mounting hole for distance column
- (f) distance column (define length with order)

### Not part of the panel clock set

- (g) cover glass
- (h) TFT display
- (i) housing

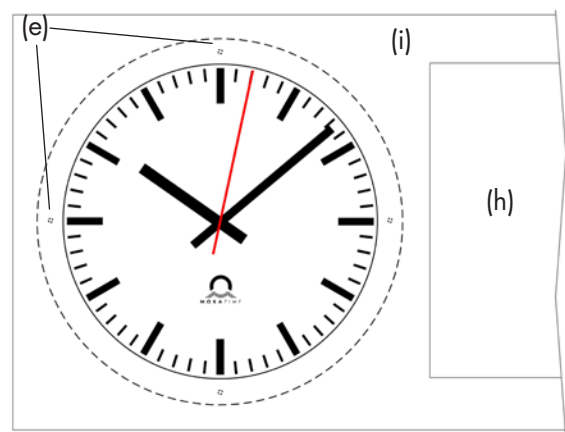


dial 200



dial 210

further dials available  
on request



### Ordering code

Type	Illumination	A	Version	Time code variants	Dial	Cover glass	Mounting type
PC	0 = none 2 = LED (side, front)	Ø 25 Ø 30 Ø 40	R1 = round, single-sided	M00 = SAM 40 M21 = SEM 40 N20 = SAN 40 N21 = SEN 40	200 210	0 = without glass	00 = standard

Technical data*		Ø 25	Ø 30	Ø 40
Dimensions	Dial diameter (A)	250 mm	300 mm	400 mm
	Total diameter (B)	300 mm	350 mm	450 mm
	Depth		36 mm	
Synchronization		NTP, MOBALine, self-setting clock		
Power supply	NTP	PoE		
	MOBALine	from MOBALine master clock		
	Illumination	mains power 230 VAC or PoE		
Temperature range		-30° ... +70° C		
Accuracy		< +/- 50 ms (synchronized)		
Weight		-		

\* for detailed data on movements, refer to the respective product brochures (SAM/SEM 40: LE-800854, SAN/SEN 40: LE-800563)