

## NETWORK MASTER CLOCK SERIES

# DTS 480X.MASTERCLOCK

*The DTS 480x.masterclock was developed especially for network environments. It is able to control conventional impulse clocks, self-setting MOBALine, DCF active or IRIG-B/AFNOR slave clocks and is used as an NTP time reference (time server) for computer systems and network clocks.*



# HIGHLIGHTS

## CLOCK LINE OUTPUTS

The DTS 480x series master clocks provide different types of clock lines. They are able to control self-setting MOBALine/IRIG-B/AFNOR or serial synchronized clocks as well as conventional impulse clocks.

- DTS 4801: 1x MOBALine/impulse/DCF active  
1x serial
- DTS 4802: 2x MOBALine/impulse/DCF active
- DTS 4803: 1x MOBALine/impulse/DCF active  
1x AFNOR/IRIG-B  
1x serial
- DTS 4806: 6x MOBALine/impulse/DCF active

## TIME SOURCE

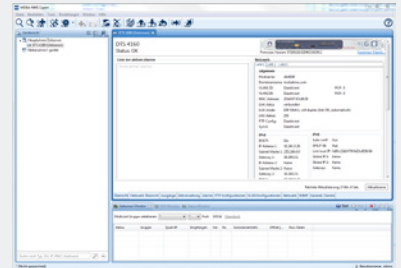
The DTS 480x.masterclock can be synchronized by a time signal receiver (DCF 4500 or GNSS 4500) and/or by NTP time servers (LAN/Internet).

## NTP SERVER

The DTS 480x can reply to more than 3'000 NTP and SNTP requests per second (up to 180'000 clients depending on NTP client configuration).

## LEGACY OUTPUTS

The DTS 480x supports legacy outputs such as IRIG and pulse.

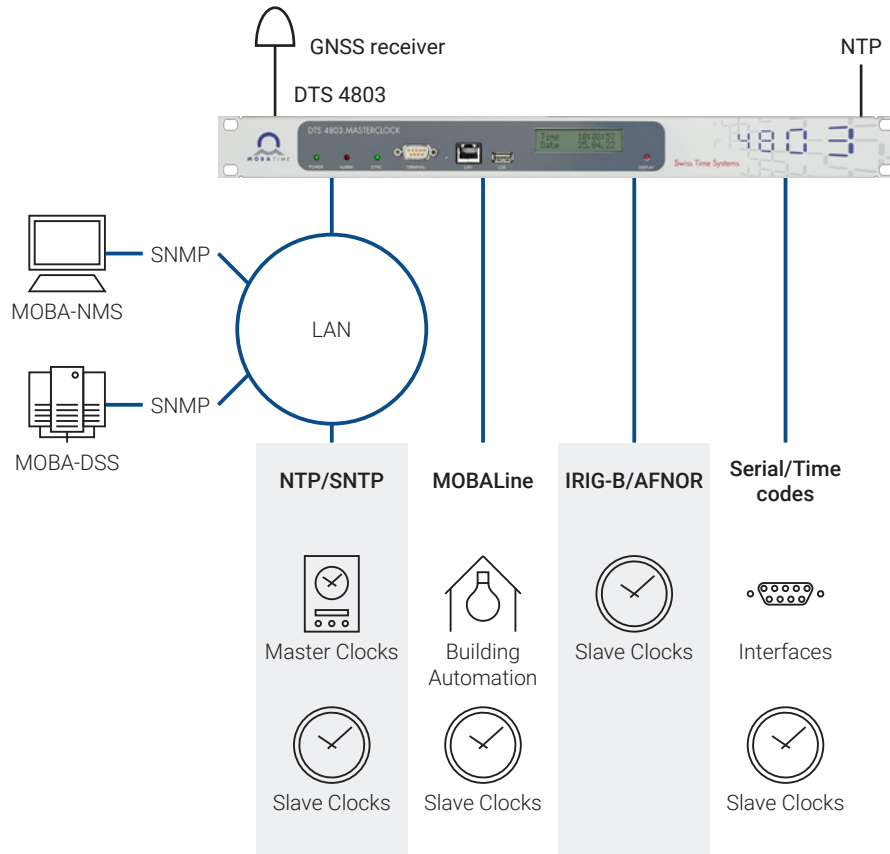


## NETWORK MANAGEMENT SYSTEM

### MOBA-NMS

The DTS 480x.masterclock can be fully monitored, configured and controlled using the Mobatime Network Management System software (MOBA-NMS). The optional Device Supervision Service (MOBA-DSS) allows for constant supervision of devices in the network.

## APPLICATIONS



# TECHNICAL DATA

## MECHANICAL DATA AND ENVIRONMENT

### General data

#### Dimensions:

DTS 4801/4802/4803:  
483 x 44 x 125 mm (19", 1U)  
DTS 4806: 483 x 44 x 224 mm (19", 1U)

#### Weight:

DTS 4801/4802/4803: 1.35 kg  
DTS 4806 Standard: 3.5 kg  
DTS 4806 Extended: 4 kg

**Housing material:** Stainless steel

**Protection degree:** IP 20

**Operating temperature:** 0–50 °C

**Operating humidity:** 10–90 % relative, no condensation

#### Power supply:

DTS 4801/4802/4803:  
90–240 VAC or 24–28 VDC, 1.5 A  
DTS 4806:  
100–240 VAC or 24–72 VDC, 6.3 A

## STANDARDS

### Conformity

The DTS 480x.masterclock conforms to the following agency approvals<sup>1</sup>:

UKCA, CE, CB, RoHS, WEEE

**EMC:** EN 50121-4<sup>2</sup>, EN 61000-6-4,  
EN 61000-6-2

**Safety:** IEC 62368

<sup>1</sup> For full list, see product manual  
<sup>2</sup> Not included in CB certificate

## REFERENCE SIGNAL INPUTS

- 1x DCF current loop (e.g. GNSS 4500)
- External NTP / SNTP server (4 NTP sources possible)

## REFERENCE SIGNAL OUTPUTS - NETWORK

- NTP server (<3'000 requests/second)
- NTP mode: Server, Peer, Broadcast, Multicast / SNTP / MD5 and SHA1 authentication for NTP
- NTP slave clock line with time zone server
- TIME (RFC 868), DAYTIME (RFC 867)

## REFERENCE SIGNAL OUTPUTS - NON-NETWORK

- Serial interface RS-232 (DTS 4801: RS-232/485), serial message programmable by script file
- 1x DCF77 (current loop)
- MOBALine/24V impulse/DCF active/DCF impulse clock line(s):  
DTS 4801/03: 1  
DTS 4802: 2  
DTS 4806: 6
- 1x IRIG-B/AFNOR clock line (DTS 4803 only)

## NETWORK INTERFACE

- 1x 10BaseT/100BaseTX

## NETWORK FEATURES

- NTP V4/V3 server (RFC 5905/1305) / SNTP (RFC 4330)
- IP configuration: IPv4 (DHCP, static IP), IPv6 (autoconfiguration, DHCPv6, static IP)

## ALARMS

- Electrical output: relay contact
- Network outputs: SNMP notifications (Traps) V2c, Mail (RFC 4954, 2195)
- Alarm LED

## OSCILLATOR STABILITY

- Holdover (after 24h synchronization) at room temperature <+/- 100ms/day (<1ppm)

## ACCURACY (TYPICAL VALUES)

- GNSS to NTP server: < +/- 0.5 ms
- DCF 77 to NTP server: < +/- 5 ms
- NTP client to NTP server: < +/- 0.5 ms
- GNSS or NTP client to clock line: < +/- 0.5 ms + accuracy of the clock line

## MANAGEMENT & SUPERVISION

- MOBA-NMS; monitoring possible with MOBA-DSS (included in MOBA-NMS EXPERT)
- Terminal menu: Serial connector (RS-232), SSH, Telnet
- SNMP (v1/v2c/v3), SNMPv3 with authentication and encryption
- System firmware download via SCP, SFTP or FTP
- LEDs: Alarm, Power, Sync

## SECURITY

- Configuration and log files are stored on non-volatile memory in order to survive power failures
- See Mobatime security guideline (available on request)
- SNMPv3, SCP, SSH, NTP authentication

# INTERFACES



1 2 3 4 5 6



DTS 4801/4802/4803

7 8 11 12 13



DTS 4806

7 8 9 10 11 12 14 15

1	<b>Status LEDs</b>	Power (green), alarm (red), synchronization (green)
2	<b>Terminal</b>	RS232 interface for local management, D-Sub 9 connector
3	<b>LAN</b>	RJ45 10/100MBit Maintenance/NTP
4	<b>USB</b>	USB host for USB flash drives For firmware updates and log files
5	<b>Display</b>	LCD, 2 lines with up to 16 (DTS 4806: 20) characters (with backlight) For status, time and network configuration info
6	<b>Display button</b>	For display illumination and paging through information displays
7	<b>Mains power supply<sup>1</sup></b>	C14 plug 90–240 VAC, 50/60 Hz or 100–240 VDC 0.5 A (DTS 4806: 2.6 A)
8	<b>DC power supply</b>	2-pin terminal 24–28 VDC, 1.5 A DTS 4806: 24–72 VDC, 6 A 28 VDC required for MOBALine
9	<b>Backup battery connection</b>	2-pin terminal 24 VDC lead-acid battery
10	<b>Alarm contact</b>	2-pin terminal Normally closed Max. load: 30 W (125 VDC or 1 A) / 60 VA (150 VAC or 1 A)

11	<b>Serial output</b>	5-pin terminal	DTS 4801/4803: RS-232/485 DTS 4802/4806: RS-232
12	<b>Alarm input (4x)</b>	8-pin terminal	18–36 VDC, 6 mA
13	<b>DCF input</b>	12-pin terminal	Input for radio receiver with current loop output (e.g. GNSS 4500, DCF 4500)
	<b>DCF output</b>		Impulse/DCF
	<b>Slave clock output 1</b>		MOBALine/impulse/DCF active
	<b>Slave clock output 2</b>		DTS 4801: not used DTS 4802: MOBALine/impulse/DCF active DTS 4803: IRIG-B/AFNOR
	<b>DC output</b>		For powering GNSS 4500
	<b>Alarm relay</b>		Normally closed Max. load: 30 W (125 VDC or 1 A) / 60 VA (150 VAC or 1 A)
14	<b>Slave clock output (6x)</b>	2-pin terminals	MOBALine/impulse/DCF active
15	<b>DCF input</b>	6-pin terminal	Input for radio receiver with current loop output (e.g. GNSS 4500, DCF 4500)
	<b>DC output</b>		For powering GNSS 4500
	<b>DCF output</b>		Impulse/DCF

*Do you have any questions?  
We are happy to help.*

Moser-Baer AG | Spitalstrasse 7 | CH-3454 Sumiswald  
Tel. +41 34 432 46 46 | Fax +41 34 432 46 99  
info@mobatime.com | www.mobatime.com

